

Poly[$\{\mu_2$ -1,2-bis[4-(3-pyridyl)pyrimidin-2-ylsulfanyl]ethane}di- μ_2 -cyanido-dicopper(I)]

 Ya-Wen Zhang,^a Hua-Ze Dong^b and Lin Cheng^{a*}

^aDepartment of Chemistry and Chemical Engineering, Southeast University, Nanjing, People's Republic of China, and ^bDepartment of Chemistry and Chemical Engineering, State Key Laboratory of Coordination Chemistry, Nanjing University, People's Republic of China

Correspondence e-mail: cep02chl@yahoo.com.cn

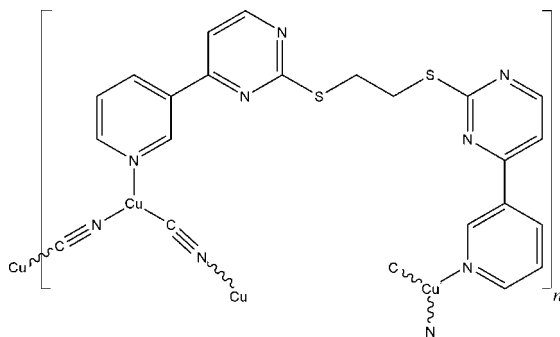
Received 12 April 2008; accepted 5 May 2008

Key indicators: single-crystal X-ray study; $T = 153$ K; mean $\sigma(\text{C}-\text{C}) = 0.004$ Å; R factor = 0.033; wR factor = 0.084; data-to-parameter ratio = 14.9.

The asymmetric unit of the title complex, $[\text{Cu}_2(\text{CN})_2(\text{C}_{20}\text{H}_{16}\text{N}_6\text{S}_2)]_n$, contains one Cu^{I} cation, one cyanide ligand and half of a centrosymmetric 1,2-bis[4-(3-pyridyl)pyrimidin-2-ylsulfanyl]ethane (bppe) ligand. The Cu^{I} atom displays a trigonal coordination geometry, being surrounded by one C atom from one cyanide anion and two N atoms from one cyanide and one bppe ligand. In the complex, each cyanide anion links two Cu^{I} atoms in a bis-monodentate mode into a zigzag $[-\text{Cu}-\text{CN}-]_n$ chain. Two parallel chains are linked by bppe ligands into a ladder chain.

Related literature

For related literature, see: Awaleh *et al.* (2005); Bu *et al.* (2003); Chen *et al.* (2003); Su *et al.* (2000); Xie *et al.* (2005).



Experimental

Crystal data

$[\text{Cu}_2(\text{CN})_2(\text{C}_{20}\text{H}_{16}\text{N}_6\text{S}_2)]$
 $M_r = 291.81$
 Monoclinic, $C2/c$
 $a = 16.025$ (4) Å
 $b = 16.296$ (7) Å
 $c = 9.3103$ (17) Å
 $\beta = 105.660$ (19)°

$V = 2341.1$ (12) Å³
 $Z = 8$
 Mo $K\alpha$ radiation
 $\mu = 2.02$ mm⁻¹
 $T = 153$ (2) K
 $0.50 \times 0.20 \times 0.10$ mm

Data collection

Bruker APEX CCD diffractometer
 Absorption correction: multi-scan
 (*SADABS*; Sheldrick, 2002)
 $T_{\text{min}} = 0.431$, $T_{\text{max}} = 0.823$

6130 measured reflections
 2290 independent reflections
 1925 reflections with $I > 2\sigma(I)$
 $R_{\text{int}} = 0.036$

Refinement

$R[F^2 > 2\sigma(F^2)] = 0.032$
 $wR(F^2) = 0.083$
 $S = 1.09$
 2290 reflections

154 parameters
 H-atom parameters constrained
 $\Delta\rho_{\text{max}} = 0.41$ e Å⁻³
 $\Delta\rho_{\text{min}} = -0.32$ e Å⁻³

Data collection: *SMART* (Bruker, 2000); cell refinement: *SMART*; data reduction: *SAINT-Plus* (Bruker, 2000); program(s) used to solve structure: *SHELXTL* (Sheldrick, 2008); program(s) used to refine structure: *SHELXTL*; molecular graphics: *SHELXTL*; software used to prepare material for publication: *SHELXTL*.

The authors thank the Program for Young Excellent Talents in Southeast University for financial support.

Supplementary data and figures for this paper are available from the IUCr electronic archives (Reference: HG2393).

References

- Awaleh, M. O., Badia, A. & Brisse, F. (2005). *Inorg. Chem.* **44**, 7833–7845.
 Bruker (2000). *SMART* and *SAINT-Plus*. Bruker AXS Inc., Madison, Wisconsin, USA.
 Bu, X.-H., Xie, Y.-B., Li, J.-R. & Zhang, R.-H. (2003). *Inorg. Chem.* **42**, 7422–7430.
 Chen, C.-L., Su, C.-Y., Cai, Y.-P., Zhang, H.-X., Xu, A.-W., Kang, B.-S. & zur Loye, H.-C. (2003). *Inorg. Chem.* **42**, 3738–3750.
 Sheldrick, G. M. (2002). *SADABS*. University of Göttingen, Germany.
 Sheldrick, G. M. (2008). *Acta Cryst.* **A64**, 112–122.
 Su, C.-Y., Liao, S., Zhu, H.-L., Kang, B.-S., Chen, X.-M. & Liu, H.-Q. (2000). *Dalton Trans.* pp. 1985–1993.
 Xie, Y.-B., Li, J.-R., Zhang, C. & Bu, X.-H. (2005). *Cryst. Growth Des.* **5**, 1743–1749.

supplementary materials

Acta Cryst. (2008). E64, m868 [doi:10.1107/S1600536808013172]

Poly[$\{\mu_2$ -1,2-bis[4-(3-pyridyl)pyrimidin-2-ylsulfanyl]ethane}di- μ_2 -cyanido-dicopper(I)]

Y.-W. Zhang, H.-Z. Dong and L. Cheng

Comment

There has been current significant interest in the rational design and synthesis of metal-organic coordination architectures by using flexible bridging units due that the flexibility and conformational freedoms of such ligands offer the possibility for the construction of unprecedented frameworks (Su *et al.*, 2000). Recently, flexible thioethers have been well established ligands in coordination and metallosupramolecular chemistry because of their rich structural information (Awaleh *et al.*, 2005, Bu *et al.*, 2003, Chen *et al.*, 2003, Xie *et al.*, 2005). Herein, we report the crystal structure of the title compound, $[\text{Cu}_2(\text{CN})_2(\text{C}_{20}\text{H}_{16}\text{N}_6\text{S}_2)]_n$, based on a pyridyl dithioether ligand—1,2-bis(4-(pyridinyl-4-)pyrimidin-2-ylthio)ethane. The asymmetric unit of the title complex, contains one Cu^{I} cation, one cyano and half a bppe (bppe = 1,2-bis(4-(pyridinyl-4-)pyrimidin-2-ylthio)ethane) ligand. The Cu^{I} atom displays a triangular geometry, being surrounded by one carbon atom (Cu1—C11a 1.873 (3) Å) from one cyano anion and two nitrogen atoms from one cyano (Cu1—N4 1.916 (2) Å) and one bppe ligand (Cu1—N3 1.873 (3) Å). In the complex, each cyano anion links two Cu^{I} atoms in a bis-monodentate mode into a zigzag $(\text{CuCN})_n$ chain. The shortest intrachain Cu—Cu distance is 4.894 (2) Å. Two parallel zigzag chains were linked by bppe ligands into a one-dimensional ladder chain, in which the Cu—Cu distance separated by bppe is 11.648 (3) Å. The ladder chain is stabilized by the intraladder C—H \cdots N hydrogen bonds (C9—N1 2.810 (3) Å; C8—N2 3.398 (4) Å). Finally, the ladder chains were constructed into a three-dimensional supramolecular network by the interladder C10—H \cdots N1c (c = $-1/2 + x, 1/2 - y, 1/2 + z$) hydrogen bond with the C \cdots N distance 2.891 (4) Å.

Experimental

A mixture of bppe (0.040 g, 0.1 mmol), CuCN (0.018 g, 0.2 mmol), and water (6 ml) were heated in a 15-ml Teflon-lined vessel at 403 K for 3 days, followed by slow cooling (5 K/hr) to room temperature. After filtration and washing with H₂O, colorless needle-like crystals were collected and dried in air (0.019 g, yield *ca* 32% based on bppe).

Refinement

H atoms were positioned geometrically and refined using a riding model, with C—H = 0.93–0.97 Å and with $U_{\text{iso}}(\text{H}) = 1.2$.

Figures

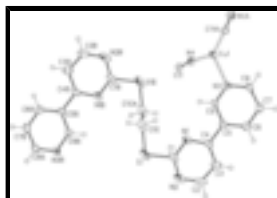


Fig. 1. Local coordination environment of the title compound with 30% thermal ellipsoids. All the hydrogen atoms are omitted for clarity. Symmetry codes for 1, a: $x, -y, 1/2 + z$; b: $1 - x, -y, 1 - z$.



Fig. 2. The zigzag $(\text{CuCN})_n$ chain in the title compound.



Fig. 3. The one-dimensional ladder chain of the title compound.

Poly[$\{\mu_2$ -1,2-bis[4-(3-pyridyl)pyrimidin-2-ylsulfanyl]ethane $\}$ di- μ_2 -cyanido-dicopper(I)]

Crystal data

$[\text{Cu}_2(\text{CN})_2(\text{C}_{20}\text{H}_{16}\text{N}_6\text{S}_2)]$

$M_r = 291.81$

Monoclinic, $C2/c$

Hall symbol: $-C\ 2yc$

$a = 16.025\ (4)\ \text{\AA}$

$b = 16.296\ (7)\ \text{\AA}$

$c = 9.3103\ (17)\ \text{\AA}$

$\beta = 105.660\ (19)^\circ$

$V = 2341.1\ (12)\ \text{\AA}^3$

$Z = 8$

$F_{000} = 1176$

$D_x = 1.656\ \text{Mg m}^{-3}$

Mo $K\alpha$ radiation

$\lambda = 0.71073\ \text{\AA}$

Cell parameters from 765 reflections

$\theta = 2.5\text{--}28.0^\circ$

$\mu = 2.02\ \text{mm}^{-1}$

$T = 153\ (2)\ \text{K}$

Needle-like, colorless

$0.50 \times 0.20 \times 0.10\ \text{mm}$

Data collection

Bruker APEX CCD
diffractometer

Radiation source: fine-focus sealed tube

Monochromator: graphite

$T = 153\ (2)\ \text{K}$

φ and ω scans

Absorption correction: multi-scan
(SADABS; Sheldrick, 2002)

$T_{\min} = 0.431$, $T_{\max} = 0.823$

6130 measured reflections

2290 independent reflections

1925 reflections with $I > 2\sigma(I)$

$R_{\text{int}} = 0.036$

$\theta_{\max} = 26.0^\circ$

$\theta_{\min} = 2.5^\circ$

$h = -19 \rightarrow 9$

$k = -20 \rightarrow 19$

$l = -11 \rightarrow 11$

Refinement

Refinement on F^2

Least-squares matrix: full

$R[F^2 > 2\sigma(F^2)] = 0.032$

$wR(F^2) = 0.083$

$S = 1.09$

2290 reflections

154 parameters

Primary atom site location: structure-invariant direct
methods

Secondary atom site location: difference Fourier map

Hydrogen site location: inferred from neighbouring
sites

H-atom parameters constrained

$w = 1/[\sigma^2(F_o^2) + (0.0456P)^2 + 0.02P]$

where $P = (F_o^2 + 2F_c^2)/3$

$(\Delta/\sigma)_{\max} < 0.001$

$\Delta\rho_{\max} = 0.41\ \text{e \AA}^{-3}$

$\Delta\rho_{\min} = -0.32\ \text{e \AA}^{-3}$

Extinction correction: none

Special details

Geometry. All e.s.d.'s (except the e.s.d. in the dihedral angle between two l.s. planes) are estimated using the full covariance matrix. The cell e.s.d.'s are taken into account individually in the estimation of e.s.d.'s in distances, angles and torsion angles; correlations between e.s.d.'s in cell parameters are only used when they are defined by crystal symmetry. An approximate (isotropic) treatment of cell e.s.d.'s is used for estimating e.s.d.'s involving l.s. planes.

Refinement. Refinement of F^2 against ALL reflections. The weighted R -factor wR and goodness of fit S are based on F^2 , conventional R -factors R are based on F , with F set to zero for negative F^2 . The threshold expression of $F^2 > \sigma(F^2)$ is used only for calculating R -factors(gt) *etc.* and is not relevant to the choice of reflections for refinement. R -factors based on F^2 are statistically about twice as large as those based on F , and R -factors based on ALL data will be even larger.

Fractional atomic coordinates and isotropic or equivalent isotropic displacement parameters (\AA^2)

	<i>x</i>	<i>y</i>	<i>z</i>	$U_{\text{iso}}^*/U_{\text{eq}}$
Cu1	0.200534 (18)	0.046307 (17)	0.73287 (3)	0.04397 (13)
S1	0.58681 (4)	0.09504 (5)	0.45165 (9)	0.0681 (2)
N1	0.46673 (11)	0.17752 (12)	0.5455 (2)	0.0424 (4)
N2	0.55869 (14)	0.25077 (17)	0.4267 (2)	0.0624 (6)
N3	0.25417 (11)	0.16006 (11)	0.71533 (19)	0.0379 (4)
N4	0.18704 (14)	0.00114 (12)	0.5379 (2)	0.0506 (5)
C1	0.52978 (14)	0.18272 (17)	0.4778 (3)	0.0496 (6)
C2	0.52069 (18)	0.3195 (2)	0.4501 (3)	0.0661 (8)
H2	0.5387	0.3684	0.4167	0.079*
C3	0.45586 (16)	0.32250 (16)	0.5214 (3)	0.0539 (6)
H3	0.4308	0.3719	0.5373	0.065*
C4	0.42959 (13)	0.24839 (14)	0.5686 (2)	0.0386 (5)
C5	0.35930 (13)	0.24308 (13)	0.6430 (2)	0.0355 (5)
C6	0.33133 (15)	0.31071 (14)	0.7073 (3)	0.0452 (5)
H6	0.3570	0.3617	0.7045	0.054*
C7	0.26579 (16)	0.30235 (15)	0.7749 (3)	0.0514 (6)
H7	0.2461	0.3475	0.8174	0.062*
C8	0.22945 (14)	0.22636 (15)	0.7791 (3)	0.0442 (5)
H8	0.1862	0.2206	0.8279	0.053*
C9	0.31811 (13)	0.16915 (13)	0.6502 (2)	0.0367 (5)
H9	0.3361	0.1233	0.6071	0.044*
C10	0.54252 (17)	0.01639 (19)	0.5480 (3)	0.0632 (7)
H10A	0.5837	-0.0283	0.5753	0.076*
H10B	0.5337	0.0392	0.6390	0.076*
C11	0.18755 (15)	-0.01827 (14)	0.4207 (3)	0.0432 (5)

Atomic displacement parameters (\AA^2)

	U^{11}	U^{22}	U^{33}	U^{12}	U^{13}	U^{23}
Cu1	0.0547 (2)	0.0449 (2)	0.04047 (19)	-0.00041 (12)	0.02691 (14)	0.00271 (11)
S1	0.0465 (4)	0.0949 (6)	0.0744 (5)	0.0002 (4)	0.0360 (3)	-0.0228 (4)
N1	0.0357 (10)	0.0536 (12)	0.0422 (10)	-0.0013 (8)	0.0179 (8)	-0.0022 (9)

supplementary materials

N2	0.0467 (13)	0.0923 (19)	0.0555 (14)	-0.0152 (12)	0.0262 (11)	0.0025 (12)
N3	0.0387 (10)	0.0410 (10)	0.0402 (10)	-0.0013 (8)	0.0212 (8)	-0.0016 (8)
N4	0.0740 (14)	0.0401 (11)	0.0468 (11)	0.0020 (10)	0.0320 (10)	0.0010 (9)
C1	0.0354 (13)	0.0772 (18)	0.0396 (12)	-0.0048 (11)	0.0163 (10)	-0.0068 (12)
C2	0.0510 (16)	0.082 (2)	0.0691 (18)	-0.0173 (15)	0.0228 (14)	0.0213 (16)
C3	0.0458 (14)	0.0561 (15)	0.0623 (16)	-0.0030 (11)	0.0190 (12)	0.0152 (12)
C4	0.0291 (11)	0.0495 (13)	0.0379 (11)	-0.0011 (9)	0.0101 (9)	0.0048 (9)
C5	0.0325 (11)	0.0379 (12)	0.0370 (11)	0.0017 (8)	0.0113 (9)	0.0054 (8)
C6	0.0444 (13)	0.0359 (12)	0.0571 (14)	-0.0006 (9)	0.0167 (11)	0.0006 (10)
C7	0.0514 (15)	0.0442 (14)	0.0643 (16)	0.0045 (11)	0.0253 (12)	-0.0131 (12)
C8	0.0409 (13)	0.0515 (14)	0.0474 (13)	0.0023 (10)	0.0241 (10)	-0.0046 (11)
C9	0.0390 (12)	0.0361 (11)	0.0401 (11)	0.0028 (9)	0.0193 (9)	0.0003 (9)
C10	0.0495 (15)	0.0784 (19)	0.0614 (16)	0.0148 (14)	0.0144 (12)	-0.0181 (15)
C11	0.0614 (15)	0.0351 (11)	0.0401 (12)	0.0082 (10)	0.0259 (11)	0.0038 (10)

Geometric parameters (\AA , $^\circ$)

Cu1—C11 ⁱ	1.873 (2)	C3—H3	0.9300
Cu1—N4	1.916 (2)	C4—C5	1.476 (3)
Cu1—N3	2.0683 (19)	C5—C9	1.384 (3)
S1—C1	1.748 (3)	C5—C6	1.385 (3)
S1—C10	1.815 (3)	C6—C7	1.369 (4)
N1—C1	1.330 (3)	C6—H6	0.9300
N1—C4	1.343 (3)	C7—C8	1.374 (3)
N2—C2	1.321 (4)	C7—H7	0.9300
N2—C1	1.338 (3)	C8—H8	0.9300
N3—C9	1.332 (3)	C9—H9	0.9300
N3—C8	1.343 (3)	C10—C10 ⁱⁱ	1.511 (5)
N4—C11	1.138 (3)	C10—H10A	0.9700
C2—C3	1.376 (4)	C10—H10B	0.9700
C2—H2	0.9300	C11—Cu1 ⁱⁱⁱ	1.873 (2)
C3—C4	1.389 (3)		
C11 ⁱ —Cu1—N4	141.12 (9)	C9—C5—C6	117.2 (2)
C11 ⁱ —Cu1—N3	116.47 (8)	C9—C5—C4	120.5 (2)
N4—Cu1—N3	102.27 (8)	C6—C5—C4	122.2 (2)
C1—S1—C10	102.68 (12)	C7—C6—C5	119.8 (2)
C1—N1—C4	116.6 (2)	C7—C6—H6	120.1
C2—N2—C1	115.1 (2)	C5—C6—H6	120.1
C9—N3—C8	117.83 (19)	C6—C7—C8	119.1 (2)
C9—N3—Cu1	121.50 (14)	C6—C7—H7	120.4
C8—N3—Cu1	120.50 (15)	C8—C7—H7	120.4
C11—N4—Cu1	170.7 (2)	N3—C8—C7	122.3 (2)
N1—C1—N2	127.0 (2)	N3—C8—H8	118.8
N1—C1—S1	120.4 (2)	C7—C8—H8	118.8
N2—C1—S1	112.58 (18)	N3—C9—C5	123.65 (19)
N2—C2—C3	123.5 (3)	N3—C9—H9	118.2
N2—C2—H2	118.3	C5—C9—H9	118.2
C3—C2—H2	118.3	C10 ⁱⁱ —C10—S1	111.6 (3)

C2—C3—C4	117.0 (3)	C10 ⁱⁱ —C10—H10A	109.3
C2—C3—H3	121.5	S1—C10—H10A	109.3
C4—C3—H3	121.5	C10 ⁱⁱ —C10—H10B	109.3
N1—C4—C3	120.8 (2)	S1—C10—H10B	109.3
N1—C4—C5	116.88 (19)	H10A—C10—H10B	108.0
C3—C4—C5	122.3 (2)	N4—C11—Cu1 ⁱⁱⁱ	173.9 (2)

Symmetry codes: (i) $x, -y, z+1/2$; (ii) $-x+1, -y, -z+1$; (iii) $x, -y, z-1/2$.

Fig. 1

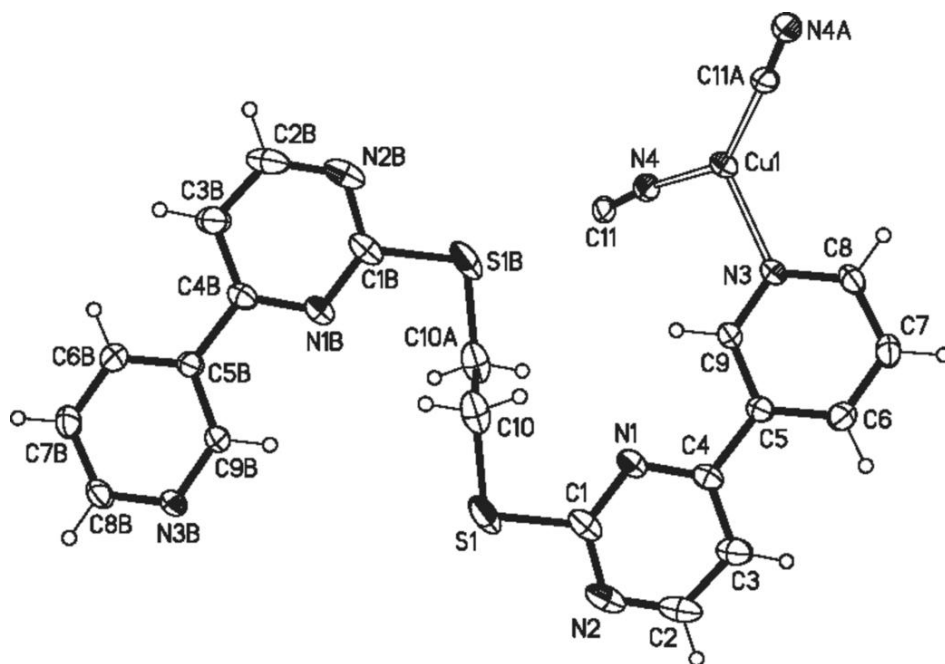


Fig. 2



Fig. 3

